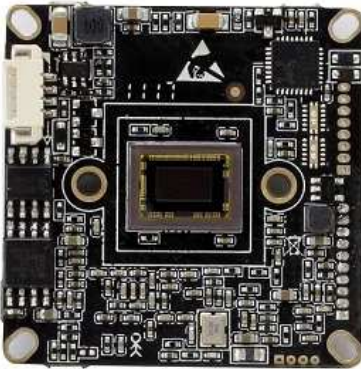


NMHC2290D

1080p Starlight H.265 IP Camera Module



- 1/2.8" SONY IMX290 / IMX291 CMOS sensor
- Starlight series with supreme low light performance
- Video codec: H.265, H.264, MJPEG
- Simultaneously triple video streaming
- True HDR
- Power over Ethernet (optional)
- Supporting ONVIF Profile S

SPECIFICATIONS

System on Chip (SoC)	Hi3516C V300
Image Sensor	1/2.8" SONY IMX290 / IMX291 CMOS with 1920 x 1080 resolution
Lens	Not included
DC-iris	Supported (optional)
Minimum Illumination	0.001 Lux/F1.2 (color); 0.0005 Lux/F1.2 (B/W)
HDR	True HDR, 100dB
Video Codec	H.265, H.264, MJPEG
Resolutions	1920 x 1080 to 480 x 272
Frame Rate	Up to 30 fps in 1920 x 1080 resolution and all other resolutions
Video Streaming	Supporting triple streaming simultaneously
Rate Control	VBR, CBR, fixed QP
Standards	ONVIF Profile S
Memory	256 MB RAM, 16 MB flash
Network Interface	100 Mbps Ethernet
Supported Protocols	IPv4, IPv6, ICMP, IGMP, QoS, TCP, UDP, DHCP, DNS, DDNS, mDNS, zeroconf, HTTP, HTTPS, NTP, RTP, RTCP, RTSP, TLS, UPnP, ARP
Supported Protocols (optional)	FTPS, RTMP, SIP, SMB/CIFS, SMTP, SNMPv3, WebRTC, P2P, 802.1X, PPPoE
Audio Coding	G.711 PCM, G.726 ADPCM, MP3 (optional), AAC LC (optional)
Audio Interface	Microphone in, line out
Software integration	ONVIF, CGI, embedded applications (optional)
System Integration	1 alarm in, 1 alarm out
Power Source	DC 12V, Power over Ethernet (optional)
Power Consumption	Typical 1.5W
Operation Conditions	-20~50°C
Dimensions (L x W x H)	38mm*38mm*9.5mm
Weight	26g

*Specifications may be subject to change without prior notice.